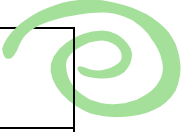
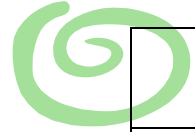


# Win a Whole or Lose a Whole

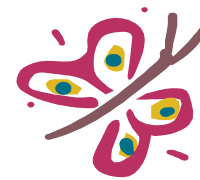
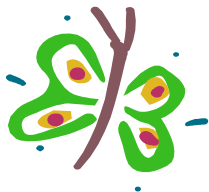
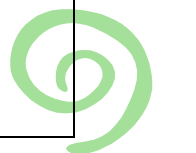
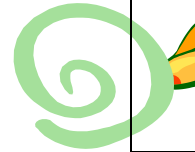
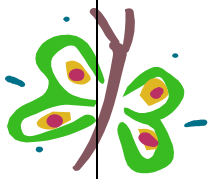
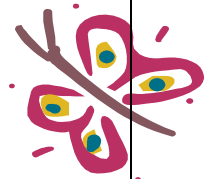
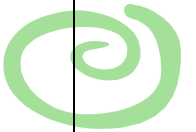


One Whole

.

Tenths

Hundredths

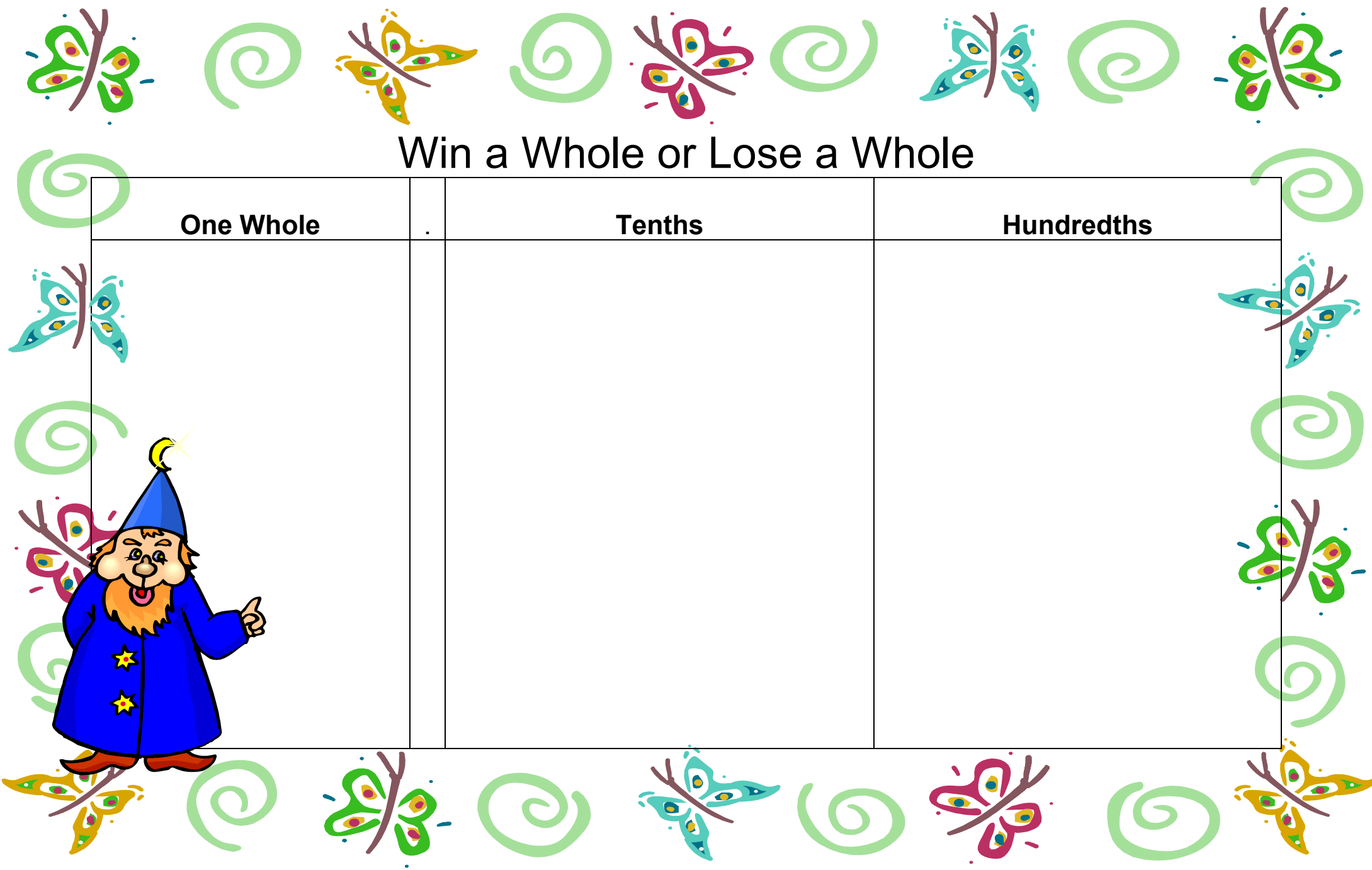


# Win a Whole or Lose a Whole

One Whole

Tenths

Hundredths



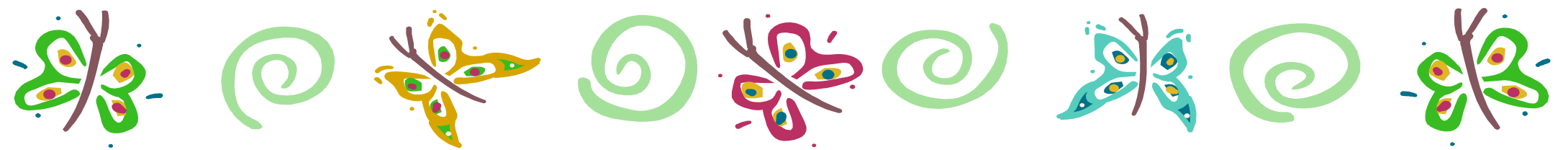
# Win a Whole or Lose a Whole

One Whole

Tenths

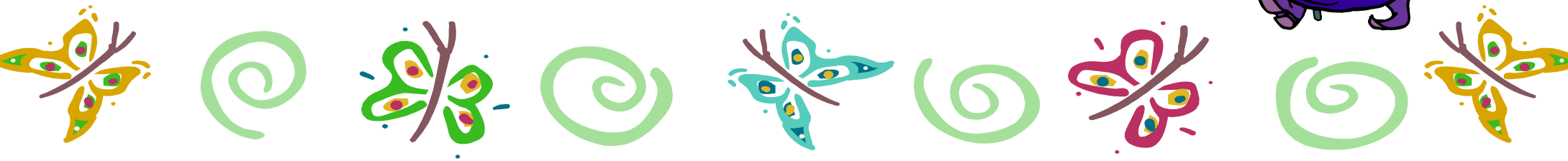
Hundredths

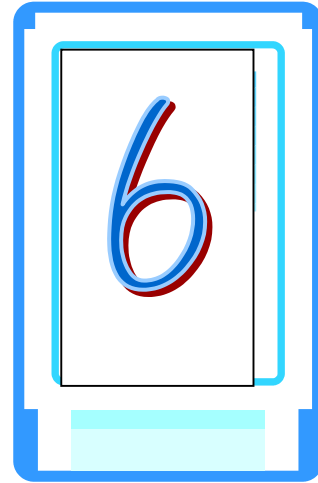
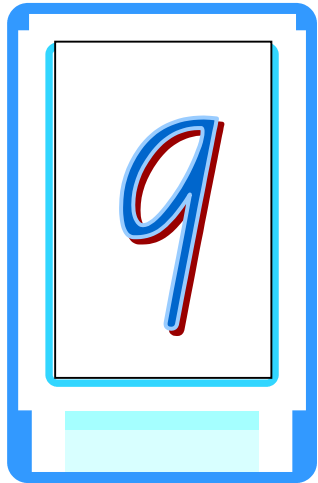
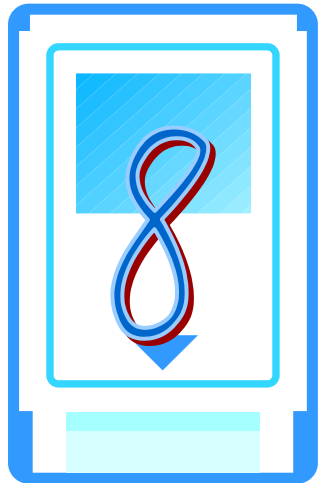
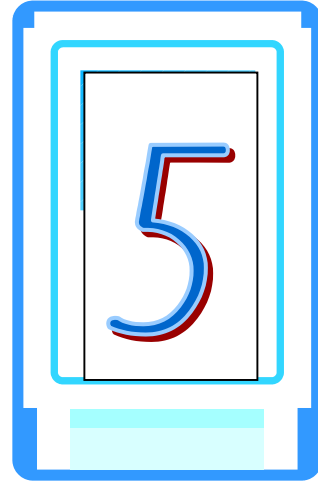
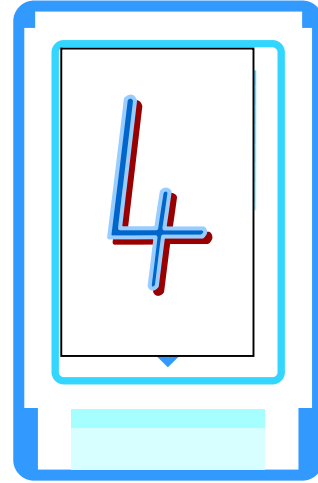
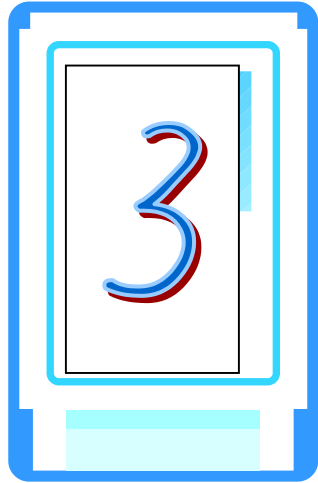
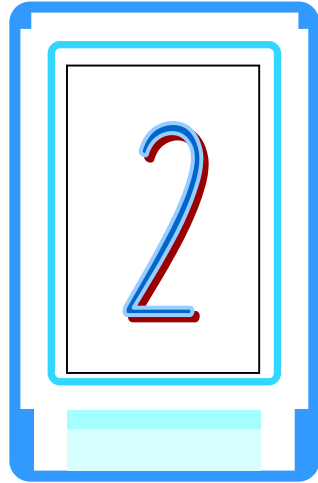
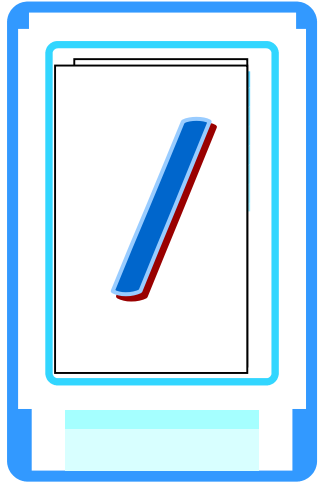


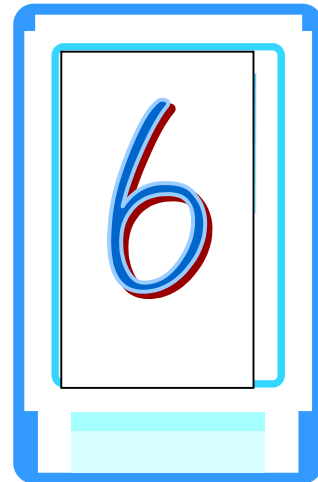
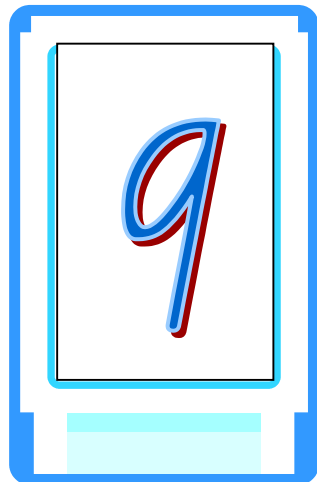
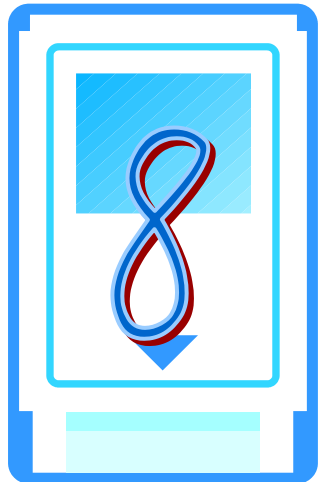
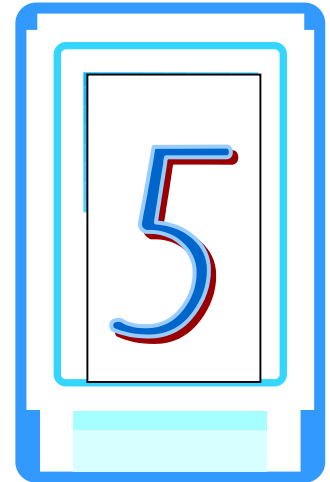
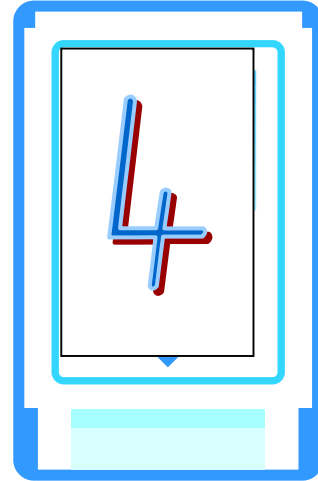
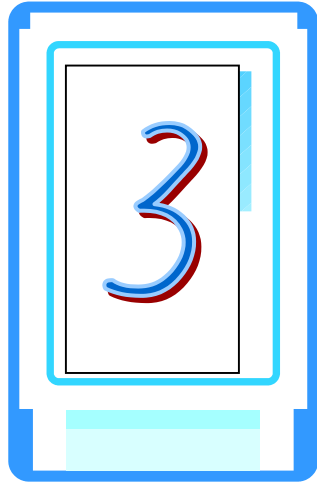
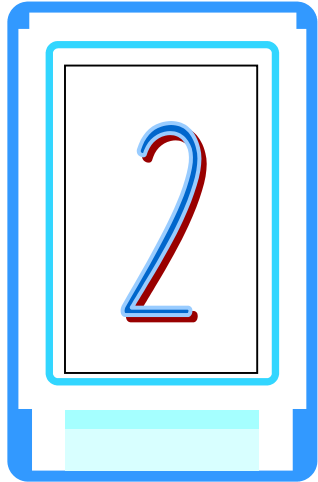
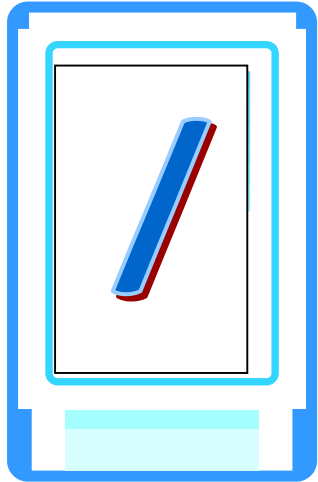


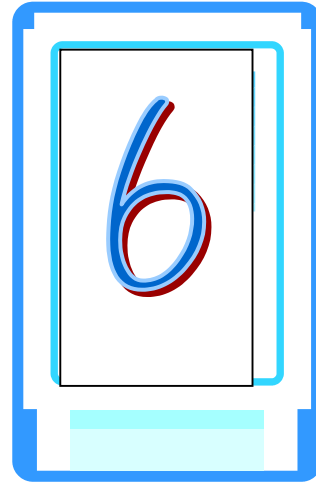
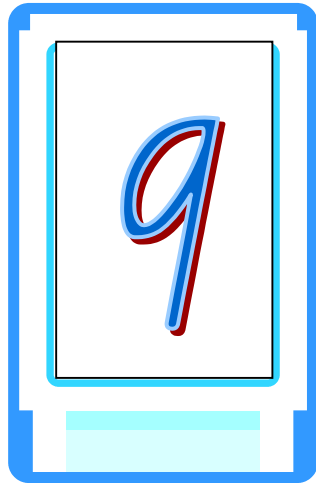
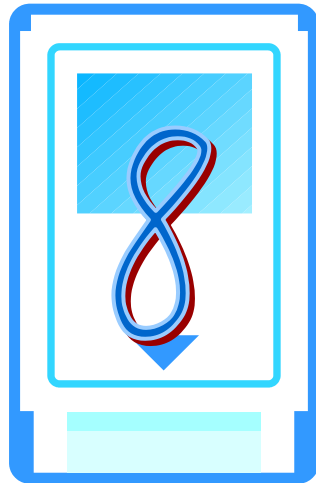
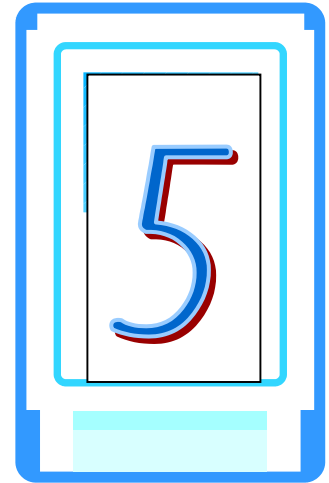
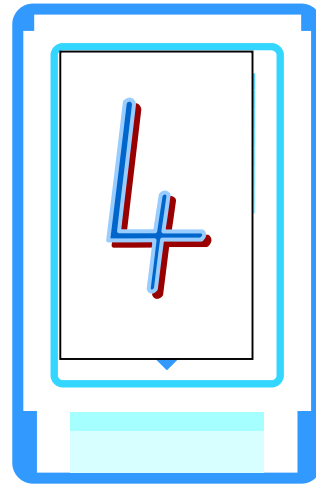
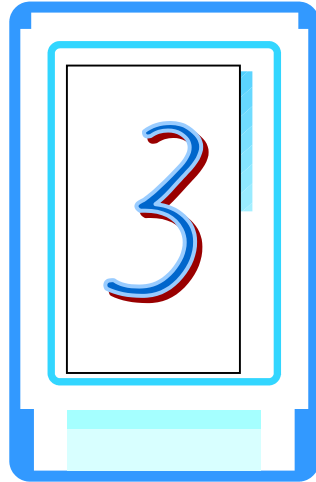
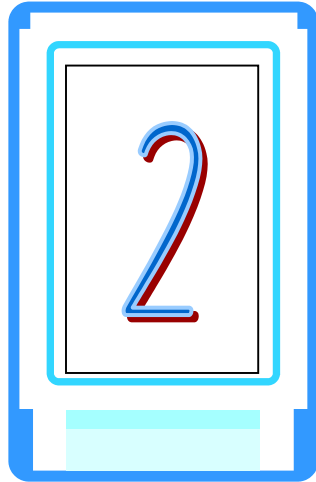
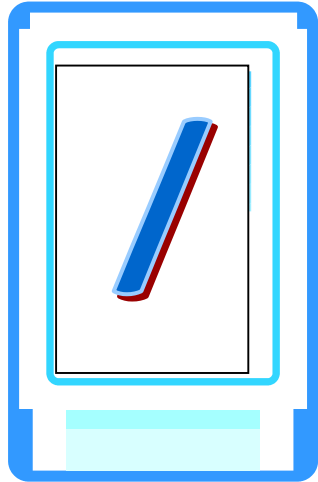
# Win a Whole or Lose a Whole

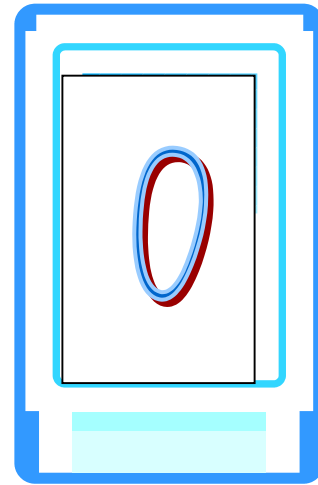
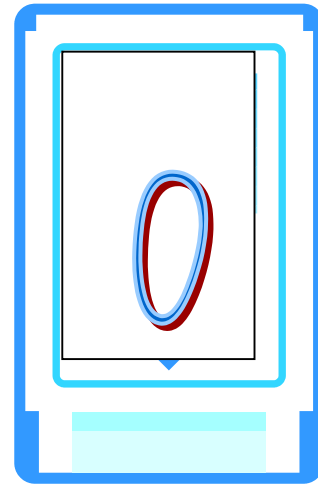
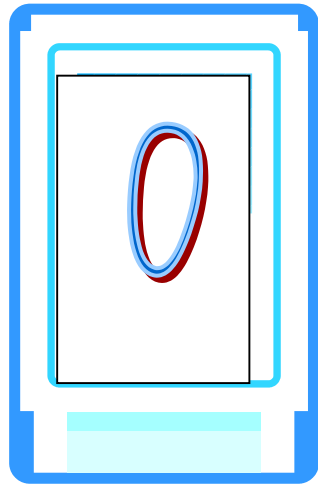
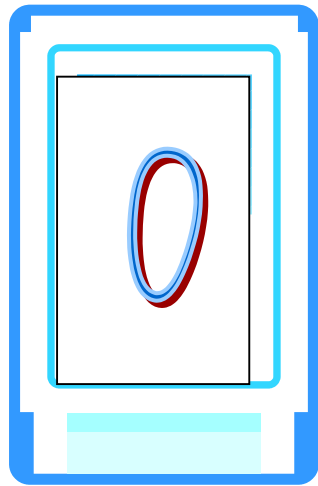
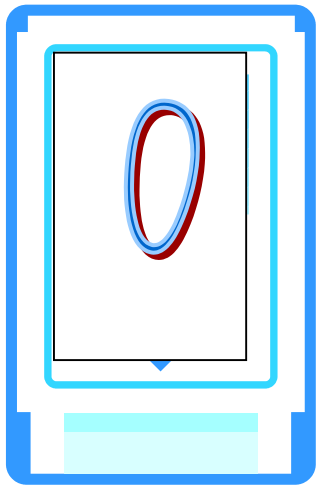
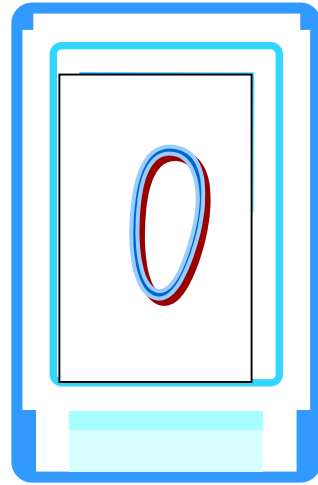
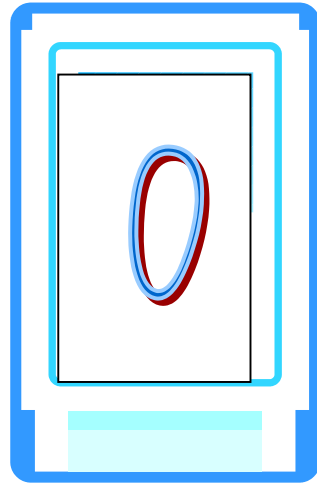
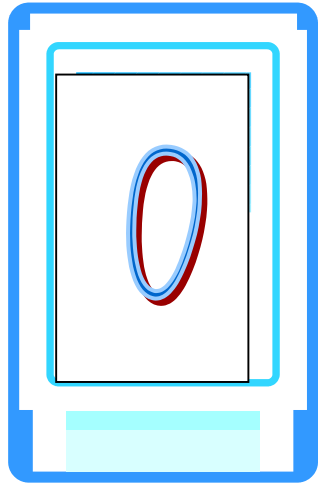
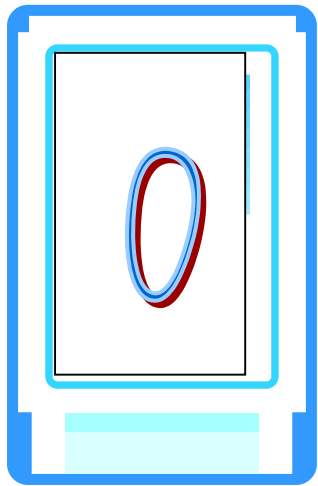
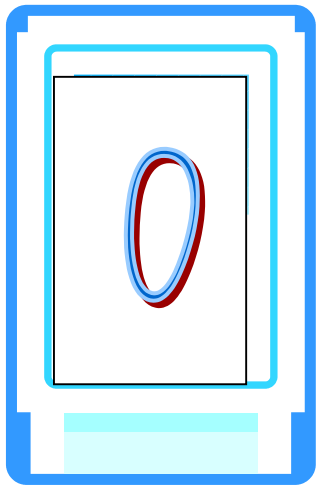
One Whole	Tenths	Hundredths



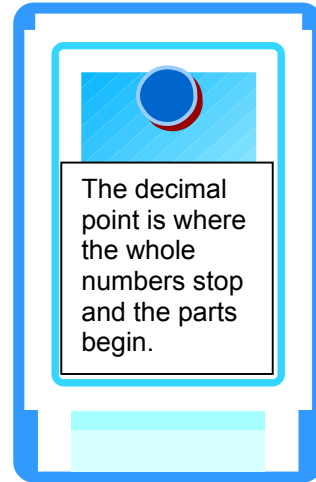
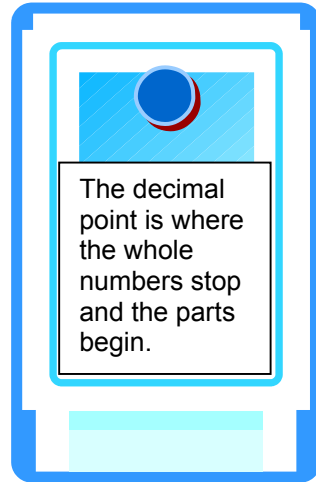
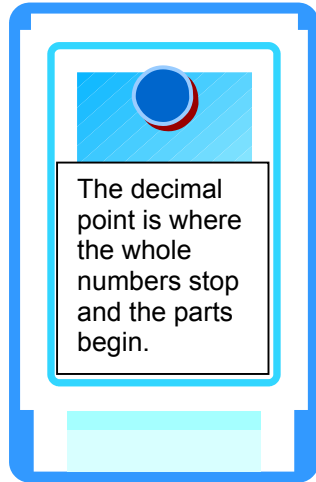
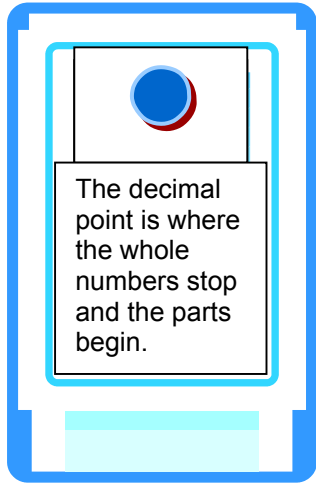












NB You'll need to print out to sets of numbers

### **How to Play ' Win a Whole' :**

Students sit in a small circle with one gameboard and a collection of MAB in the centre.  
Each child takes a turn to throw the dice (if a die goes off the board the throw is not counted).  
The total on the dice tells the players how many shorts (hundredths) they may take from the "bank" in the centre. When they have ten shorts they must trade them for a long (1 tenth).  
When they have ten longs they trade them for a flat (a whole or one).  
The first player with a flat wins the game.



A whole, tenth and hundredth

### **How to Play ' Win a Lose a Whole'**

Same as above you just start with a whole and subtract the numbers shown by the dice.  
First person with no MAB left is the winner.

Extension:

Each child has a set of the numeral cards laid out in piles above the board.  
Each child labels each column on each throw of the dice with the numeral cards and reads the decimal to the group.

NB When storing these games I place 1 board and a set of numerals in a plastic bag with a seal.